



Rotary Club of Darwin Sunrise



**AN INTRODUCTION TO
OUR CLUB AND ROTARY
FOR NEW AND
PROSPECTIVE MEMBERS**



REVISED NOVEMBER 2006

Our Sponsors



Northern Territory Government

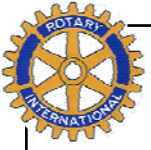
ANGUS & ROBERTSON
Australia's Largest Bookseller



CROWNE PLAZA™

DARWIN



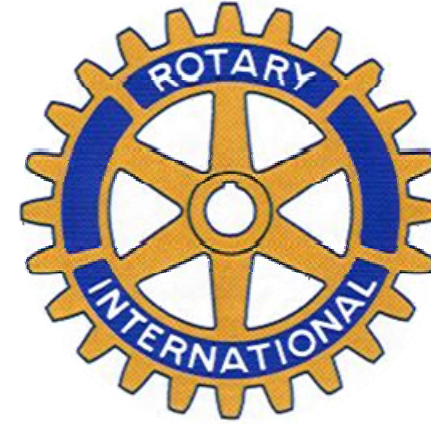


8. A Rotarian should consider service at District and International level as the opportunity may arise and as may be applicable to family / work responsibilities.
9. A Rotarian is thoughtful and courteous in the matter of advising the Attendance Officer of an apology before 12 noon Wednesday and where applicable any make-up made. Courtesy is extended to other members by not smoking during the meeting.
10. A Rotarian rotates and does not stick to a favourite seat nor does he/she develop cliques within the Club - lengthen the chain of fellowship by inclusion.
11. A Rotarian shall not use the Rotary emblem or word Rotary, or Rotarian on stationary, business cards or for any advertising or commercial purposes.



On behalf of the Board and members of the Rotary Club of Darwin Sunrise - the hand of fellowship is extended to you as you join a committed group of like-minded business and professional people who believe that '**Service Above Self**' will make a difference in our community and promote world understanding and peace.

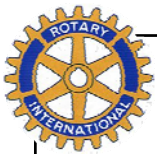
This is Rotary



PROVIDING COMMUNITY AND
INTERNATIONAL SERVICE

ENCOURAGING HIGH ETHICAL
VOCATIONAL STANDARDS

BUILDING INTERNATIONAL GOODWILL,
PEACE AND UNDERSTANDING



'Service Above Self'

Rotary is

An organisation of business and professional leaders united world-wide who provide community and humanitarian service, encourage high ethical standards in their businesses and professions and help build goodwill, peace and understanding throughout the world.

Rotary is a volunteer organisation with over 1.5 million service-minded people belonging to in excess of 32,000 Rotary Clubs in 168 countries world-wide.

Each Rotary Club meets weekly so that members may discuss the Club's service goals and enjoy each other's fellowship. Membership is by invitation and is on the basis of representation of businesses and professions through a system that ensures membership from a wide cross section of the community.

Rotary International is the association of all Rotary Clubs world-wide.

Rotary Clubs involve themselves in a wide range of community, cultural and environmental projects to meet the specific needs of their communities and assist in National and International humanitarian and social programs.

Youth is a particular focus of Rotary and as an example its Youth Exchange Program annually sends over 6,000 young people of secondary school age abroad for a school year, living with host Rotary families and experiencing another language, culture and society first hand.

Rotary Foundation provides world-wide community service and annually spends in excess of \$15 million to promote international understanding and peace through educational and humanitarian programs. PolioPlus Immunization Campaign is an ongoing Foundation program that aims at eradicating Polio world-wide and to date some \$600 million has been expended to achieve that goal.



In Conclusion

1. You join our Club by invitation, having been deemed to be a worthy and chosen representative of your business or profession. It is through you that the message and spirit of Rotary will be imparted to others and shared with our community.
2. Rotary is not a secret organisation, although taking a low profile over many years and hesitancy towards seeking publicity may have created this misunderstanding.
3. Rotary does not discriminate on race, religion, nationality or gender, nor does it seek to supplant or interfere with other worthy community organisations.
4. A Rotarian is not asked to put Rotary in front of his or her family or business / professional responsibilities.
5. A Rotarian is expected to actively participate in his or her Club by maintaining the highest attendance level possible. Weekly attendance is the means of acquaintance, fellowship and service.
6. A Rotarian is expected to share Rotary with others by proposing other like minded individuals to join in the ideals of Rotary He/she will also take responsibility to assist in the member's induction into Rotary.
7. A Rotarian is expected to serve in some capacity in each Rotary Year either within one of the four committees or accepting the honour of office within the Club.



Rotary Acronyms

ARHRF: Australian Rotary Health Research Foundation

“Better Health for all Australians” improving the quality of life for future generations by seeking to prevent or cure ill health through community education and scientific intervention or invention.

GSE: Group Study Exchange

Group Study Exchange pairs Rotary districts throughout the world to send and receive study teams of young professionals.

NYSF: National Youth Science Forum

An on campus (ANU) program in Canberra for year 11 students who have demonstrated outstanding interest in Science and Technology.

RAWCS: Rotary Australia World Community Service

Assists Rotary clubs to provide humanitarian and educational aid to people in other countries either through other Rotary clubs or through known and proven agencies.

ROMAC: Rotary Overseas Medical Aid for Children

Arranges life saving procedures and operations in Australian hospitals for children 15 yrs and under from the Pacific basin and South East Asia who suffer from deformity or disfigurement.

YEP: Youth Exchange Program

An exchange program for senior secondary school students to travel abroad, live with a Rotary host family, and experience life first hand in a different culture, school and social environment .

TRF: The Rotary Foundation

Established by Rotary International to serve humanity. The mission of the Rotary Foundation is to support the efforts of Rotary International in promoting world understanding and peace through international humanitarian, educational and cultural exchanges.



The Beginnings of Rotary

Today, Rotary is well known throughout the world for its dedication to service and international goodwill. Changing the world through service, however, was hardly uppermost in the mind of Paul P. Harris when he founded the organization in 1905. Harris, a lawyer in Chicago, Illinois, USA, had been raised in a rural village in Vermont. He envisioned a new kind of club for professionals that would kindle the fellowship and friendly spirit he had known in his youth.



Paul P. Harris
1868 - 1947

On the evening of 23 February 1905, Harris invited three friends to a meeting. Silvester Schiele, a coal dealer, Hiram Shorey, a merchant tailor, and Gustavus Loehr, a mining engineer, gathered with Harris in Loehr's business office in Room 711 of the Unity Building in downtown Chicago. They discussed Harris' idea that business leaders should meet periodically to enjoy each others company

and to enlarge their circle of business and professional acquaintances. The club met weekly; membership was limited to one representative from each business and profession. Though the men didn't use the term Rotary that night, that gathering is commonly regarded as the first Rotary club meeting.

As they continued to convene, members began rotating their meetings among their places of business, hence the name Rotary. After enlisting a fifth member, printer Harry Ruggles, the group was formally organized as the Rotary Club of Chicago.

These early "Rotarians" realised that fellowship and mutual self-interest were not enough to keep a club of busy professionals meeting each week. Reaching out to improve the lives of the less fortunate proved to be an even more powerful motivation.

With this inaugural step towards service, Rotary became the world's first service-club organization.



The Ideals of Rotary

ROTARY'S MOTTO

'Service Above Self'

OBJECT OF ROTARY

To encourage and foster the ideal of service as a basis of worthy enterprise and, in particular, to encourage and foster:

First: The development of acquaintance as an opportunity for service.

Second: High ethical standards in business and professions; the recognition of the worthiness of all useful occupations and the dignifying of each Rotarian's occupation as an opportunity to serve society.

Third: The application of the ideal of service in each Rotarian's personal, business and community life.

Fourth: The advancement of international understanding, goodwill, and peace through a world fellowship of business and professional persons united in the ideal of service.

ROTARY'S FOUR WAY TEST

Of the things we think, say or do:

Is it the truth?

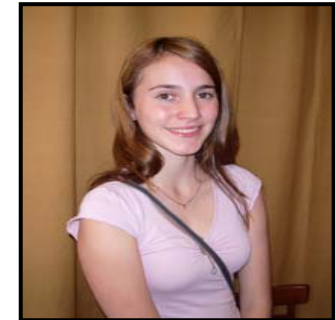
Is it fair to all concerned?

Will it build goodwill and better friendships?

Will it be beneficial to all concerned?



The Joys of gate duty
President Sandy with the two
Kens 2006.



Chloe Lauverjon
Our sponsored Youth
Exchange Student to
Canada 2007



Our Group Study Exchange
Team member Banda West
(right) with Julie and Jim.



Wendy and Di travelled to India
In October 2006 to take part in
the administration of Polio drops
to village children as part of the
PolioPlus program.
They are pictured with Di's
Grandchild Erin and some of the
"Give-a-ways' taken for the kids.



Celebrating Canada and
The NT's "Birthday"
July 2006



Pauline Moullet
Our Youth Exchange Student
from Angouleme, France 2005.



President Malika (centre)
presents our cheque for
\$3,500 to the Duke's Mob
at our Christmas party 2004



Annette Ingham (centre)
St John Ambulance Paramedic of the Year 2006



Rotary International

Rotary is organised at the international, zone, district, group and club level to carry out its programs of service around the globe. A Rotarian is a member of his or her Rotary club, and the club is a member of the association known as Rotary International (RI). Each club elects its own officers and board of directors and enjoys considerable autonomy within the framework of its constitution and the Rotary International Constitution and Bylaws.

Rotary clubs in turn are grouped together into Rotary districts, each led by a District Governor who is an officer of RI and represents the RI Board of Directors in the field. Currently (2005) there are 1,214,127 Rotarians in 32,176 Clubs, within 529 Rotary Districts throughout 167 Countries and 34 Zones. The District/Club number allocated to Districts and Clubs changes as boundaries and population increase/decrease.

A Summary of the Five Administrative Levels of Rotary

**Rotary International
Chicago USA**

**Zone 7
South Pacific & Philippines**

**District 9550
Part of NT and Northern Queensland**

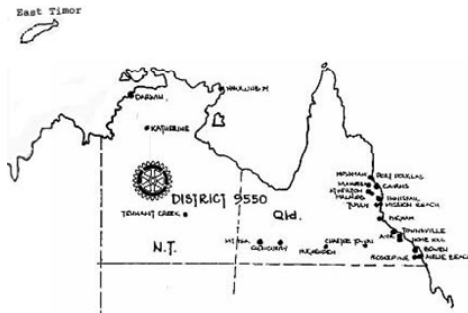
**Group 1
NT Clubs within D9550**

**The Rotary Club of
Darwin Sunrise**



Our District

The 53 Rotary Clubs of Rotary District 9550 cover twenty percent of the Australian continent or about 1.5 million square kms. The district covers approximately the northern half of Queensland and the Northern Territory (NT) combined. In a district this size there is an enormous range of geographic diversity. It includes the lush rainforests of the tropical north coast of Queensland, Kakadu National Park just outside Darwin in the NT and the arid outback of western Queensland and the NT. The remote areas of Thursday Island and the Torres Strait are found in the northern part of our District whilst the south is bounded by Tennant Creek (NT) and Airlie Beach (QLD). The District was extended in 2002 to include the Rotary Club of Dili, in Timor Leste.



Our District is divided into six administrative groups. The Rotary Club of Darwin Sunrise is in Group 1 and comprises all the Darwin, Nhulunbuy, Katherine and Tennant Creek clubs, all within the northern part of the Northern Territory. The Rotary Club of Dili was included in Group 1 in 2002.

The group approach adopted by our district enables much closer linkages between clubs within a defined geographic area. Each group has an Assistant Governor and appointed group representatives for many of the district committees. This devolved structure promotes greatly improved communications within our vast and diverse district.

The District Governor (elected annually) is an officer of Rotary International and is directly responsible for the administration of the district. The district headquarters rotates from group to group usually based on the District Governor's location. Similarly many of the district officers and committees come from the District Governor's group for administrative convenience.



- ◆ Support for the establishment of the ODB Orphanage in East Timor
- ◆ Annual sponsorship of three orphans in Indonesia
- ◆ Active involvement in Rotary's International Youth Exchange Program by sponsoring and hosting Students on Exchange.
- ◆ Annual funding of students to attend Science Summer School Forums.
- ◆ Annual Tuition fees to assist disadvantaged students at CDU Centre for Youth Music.
- ◆ Annual gate-keeping duties at Darwin's Tropical Garden Spectacular.
- ◆ Annual St John Ambulance NT Paramedic of the Year Award
- ◆ Annual Plain English Speaking Awards
- ◆ Annual Prizes for students in the Northern Territory University's Environmental Science and Indonesian Studies courses.

Tony Wood
2005 St John Ambulance
Paramedic of the Year





Service Above Self in Action

We are committed to the ideals of Rotary and in the relatively short history of the club many community projects have been undertaken and the club has been active in supporting Rotary International and Rotary Foundation programs.

Such projects and programs have included in part:

- ◆ The purchase of foetal heart monitor for the NT Family Planning Association
- ◆ The erection of a community shade shelter at Lake Alexander
- ◆ The installation of Aqua lifts for the disabled at Parap Pool & the Salvation Army Nursing Home
- ◆ A "backyard blitz" landscaping project at the Joan Ridley Mental Health Ward at Royal Darwin Hospital
- ◆ \$3,500 to the Duke of Edinburgh's Award program to help purchase a new "troop carrier" to support Territory youth
- ◆ Ongoing support for the work of the Melaleuca Refugee Centre in Darwin.
- ◆ Construction of a visitor's broad-walk in the Stuart Park Rain Forrest Reserve.
- ◆ The purchase of an ophthalmoscope and retina scope for use at eye clinics in Aboriginal communities
- ◆ \$2,100 for a computer, printer and software package for the NT Autism Association's Office.



Our Club

Our club commenced in 1989 with the distinction of being the first mixed gender and breakfast club in the Northern Territory, and has a membership representing a wide cross section of the Darwin community. We are committed to the ideals of Rotary and in the relatively short history of the club, many community projects have been undertaken and the club has been active in supporting Rotary International and Rotary Foundation's humanitarian programs world-wide.

We are a relatively small group and the club continues to seek out new members in order provide an opportunity for others to share Rotary with us, have them honour their vocation, enliven our meetings and contribute to the ideals of Rotary.

OUR CLUB BANNER



Designed by PDG Guan Tek Yeo.

The design and colour is distinctive and represents elements of our community.

The blue waters of the Arafura Sea and the raising sun as the Rotary emblem radiating the energy of Rotary are coupled with an Aboriginal painting of the famous Barramundi a symbol of the Top End.

Our Club is a constituted body in its own right, affiliated with its Rotary District 9550 and Rotary International. The Club's governing body is an elected Board as provided for in the Club's By-Laws.



General Membership Information

Meeting Place:

The Club meets at the Crowne Plaza Hotel at 7 am for fellowship prior to the commencement of the meeting at 7.15 am. Fellowship is an important time to be enjoyed by all, meeting visiting Rotarians, guests and for members rostered for duty to prepare for the meeting.

Annual Dues:

Every member of the Club pays annual dues of \$ 260.00 or \$130.00 each half year. This fee includes a subscription to the Rotary Down Under Magazine posted to members each month and provides funds for administration at the three levels of Rotary administration namely - Club, District and Rotary International.

Annual General Meeting:

The Club Annual General Meeting is held on the second Club meeting in November of each year. At that meeting members of the Incoming Board (to take office in July of the following year) are elected. Further the President Elect to take office two years hence is also elected.

The Club Year:

Is deemed to be from the 1 July of one year to 30 June of the following year. Regardless, members of the incoming Board will take office immediately following the Club Change Over Dinner. Half yearly dues are payable on the 1 July and 1 January of each year.

Attendance:

Rotarians are expected to maintain an attendance percentage of at least 60% during the first and second six months of each Club Year.

Leave of Absence:

Upon written application, setting forth good and sufficient reasons, the Club Board may grant leave of absence excusing a member from attending meetings for a specific period.



Make-Ups:

A member absent from a regular meeting is expected, where possible, to make up such absence by attending a regular meeting of any other Rotary Club, on any of the 14 days immediately preceding the day of absence, or any of the 14 days immediately following the day of absence from his or her Club.

Rotarians are also able to do a make-up on the web by accessing an Eclub.

A record of attendance should be obtained from the Club visited and given to the Club's Attendance Officer upon return. The make up is regarded as attendance and maintains the Rotarian's attendance percentage.

Meal Costs:

Each member is responsible for their meal cost and that of their guest/s - currently \$16 per head. Included in this is a Club levy to cover the cost of Club guests eg Guest Speakers, presentations and prizes.

Guests:

Rotarians are encouraged to bring guests to any meeting.

Partners of Rotarians:

Our partners hold a very special place in Rotary and the life of our Club- they are always welcome at meetings and to share in our activities.

Special Occasions:

Apart from normal weekly meetings, there are special occasions when partners and other guests are specifically encouraged to attend - such as the Club Change Over Dinner, the visit of our District Governor, hosting a visiting Group Study Exchange Team, the Club Christmas Function and other more social occasions.